

**FOREST
HEIGHTS**

Living In The Heart of Nature

WHERE LIFE BLOSSOMS

LIFE IS TRULY BLOSSOMING AT FOREST HEIGHTS.

Where others are merely concerned with style and function, Aster considers the holistic aspects of living. From the warm feeling of coming home to the assurance that all the conveniences of everyday life are just minutes away, Aster gives you everything you could ever need in an ideal residential layout where the lush foliage of countless greenery casts its serene shade on the surroundings.



A member of UEM Group A member of the Hongkong Land Group

MCL Land



06.761.8133

SUNRISE MCL LAND SDN BHD

www.sunrisemcl.com.my

Open daily Monday - Friday 8:30am - 6:00pm,
Saturday 8:30am - 5:00pm,
Sunday 12:00pm - 4:00pm,
Closed on public holidays
GPS: 2°42'26"N, 101°58'2"E

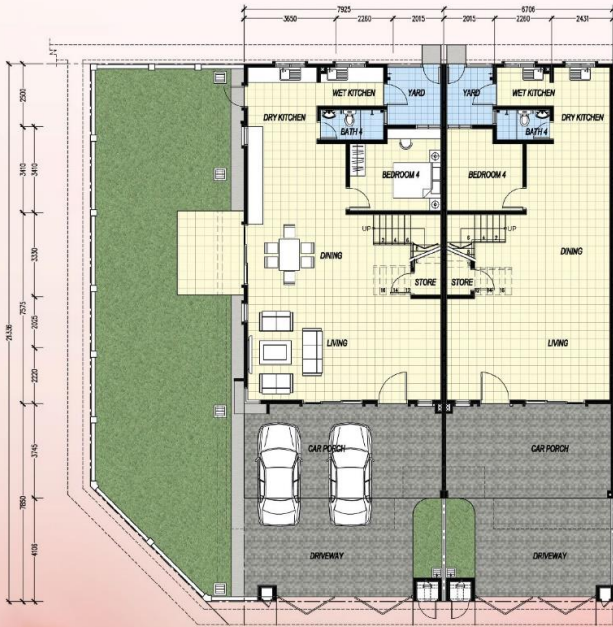
Developer License No: 8024-6/06-2017/0581(L). Advertising Permit No: 8024-6/06-2017/0581(P). Validity period: 26.6.2015 - 25.6.2017. Land Encumbrance: Nil. Land Tenure: Freehold. Authority Approving Plan: Majlis Perbandaran Seremban. Building Reference No: MPS.B.KB1-04/15. Expected Date of Completion: November 2017. Total Unit: 167 units. RM420,000(Min)-RM800,000(Max) Type A. RM460,000(Min)-RM780,000(Max) Type B. RM600,000(Min)-RM1.1Mil(Max) Type C.

2 - STOREY PREMIER LINK HOMES

TYPE A

22' x 70' FLOOR PLAN

Build up 2,300 sf | 4 BEDROOMS AND 4 BATHROOMS



Ground Floor



First Floor

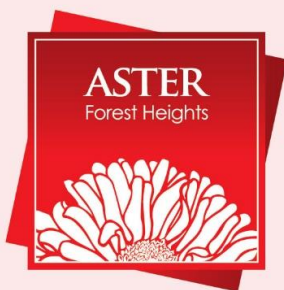


SURROUNDING AMENITIES & FACILITIES

- AEON Big Hypermarket
- Econsave Hypermarket
- McDonald's Restaurant
- SMK Taman Forest Heights
- SK Sri Mawar

ACCESS CONNECTIVITY

- Senawang Commuter Hub
- PLUS Highway (Senawang Toll)
- LEKAS Highway (Ampangan Toll)



FOREST
HEIGHTS

Living In The Heart of Nature

WHERE LIFE BLOSSOMS

LIFE IS TRULY BLOSSOMING AT FOREST HEIGHTS.

Where others are merely concerned with style and function, Aster considers the holistic aspects of living. From the warm feeling of coming home to the assurance that all the conveniences of everyday life are just minutes away, Aster gives you everything you could ever need in an ideal residential layout where the lush foliage of countless greenery casts its serene shade on the surroundings.



A member of UEM Group A member of the Hongkong Land Group

MCL Land



06.761.8133

SUNRISE MCL LAND SDN BHD

www.sunrisemcl.com.my

Open daily Monday - Friday 8:30am - 6:00pm,
Saturday 8:30am - 5:00pm,
Sunday 12:00pm - 4:00pm,
Closed on public holidays
GPS: 2°42'26"N, 101°58'2"E

Developer License No: 8024-6/06-2017/0581(L). Advertising Permit No: 8024-6/06-2017/0581(P). Validity period: 26.6.2015 - 25.6.2017. Land Encumbrance: Nil. Land Tenure: Freehold. Authority Approving Plan: Majlis Perbandaran Seremban. Building Reference No: MPS.B.KB1-04/15. Expected Date of Completion: November 2017. Total Unit: 167 units. RM420,000(Min)-RM800,000(Max) Type A. RM460,000(Min)-RM780,000(Max) Type B. RM600,000(Min)-RM1.1Mil(Max) Type C.

2 - STOREY PREMIER LINK HOMES

TYPE B

24' x 70' FLOOR PLAN

Build up 2,520 sf | 5 BEDROOMS AND 4 BATHROOMS



Ground Floor



First Floor

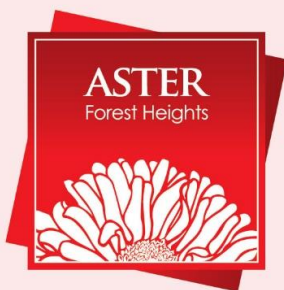


SURROUNDING AMENITIES & FACILITIES

- AEON Big Hypermarket
- Econsave Hypermarket
- McDonald's Restaurant
- SMK Taman Forest Heights
- SK Sri Mawar

ACCESS CONNECTIVITY

- Senawang Commuter Hub
- PLUS Highway (Senawang Toll)
- LEKAS Highway (Ampangan Toll)



WHERE LIFE BLOSSOMS

LIFE IS TRULY BLOSSOMING AT FOREST HEIGHTS.

Where others are merely concerned with style and function, Aster considers the holistic aspects of living. From the warm feeling of coming home to the assurance that all the conveniences of everyday life are just minutes away, Aster gives you everything you could ever need in an ideal residential layout where the lush foliage of countless greenery casts its serene shade on the surroundings.



A member of UEM Group A member of the Hongkong Land Group

MCL Land

SUNRISE MCL LAND SDN BHD



06.761.8133

www.sunrisemcl.com.my

Open daily Monday - Friday 8:30am - 6:00pm,
Saturday 8:30am - 5:00pm,
Sunday 12:00pm - 4:00pm,
Closed on public holidays
GPS: 2°42'26"N, 101°58'2"E

Developer License No: 8024-6/06-2017/0581 (L). Advertising Permit No: 8024-6/06-2017/0581 (P). Validity period: 26.6.2015 - 25.6.2017. Land Encumbrance: Nil. Land Tenure: Freehold. Authority Approving Plan: Majlis Perbandaran Seremban. Building Reference No: MPS.B.KB1-04/15. Expected Date of Completion: November 2017. Total Unit: 167 units. RM420,000(Min)-RM800,000(Max) Type A. RM460,000(Min)-RM780,000(Max) Type B. RM600,000(Min)-RM1.1Mil(Max) Type C.

3 - STOREY SUPERLINK HOMES

TYPE C - 24' x 80' FLOOR PLAN

Build up 3,722 sf | 7 BEDROOMS AND 6 BATHROOMS



Ground Floor



First Floor



Second Floor



SURROUNDING AMENITIES & FACILITIES

- AEON Big Hypermarket
- Eonsave Hypermarket
- McDonald's Restaurant
- SMK Taman Forest Heights
- SK Sri Mawar

ACCESS CONNECTIVITY

- Senawang Commuter Hub
- PLUS Highway (Senawang Toll)
- LEKAS Highway (Ampangan Toll)